

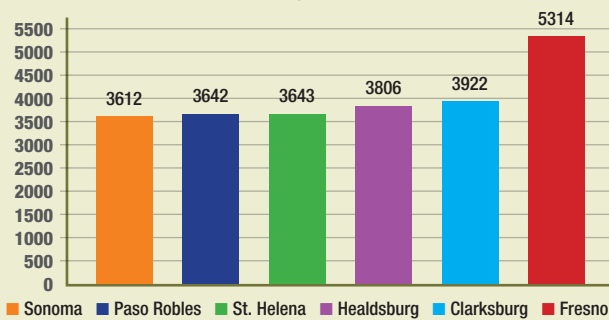
Clarksburg Climate

We take pride and are resolute in managing family vineyards that are being meticulously maintained in order to consistently produce the best wine the Clarksburg appellation and State of California has to offer. We have seen first-hand that great wine can only be crafted from great grapes and that every great wine is first created in the vineyard. Each year we gain more knowledge of our land, the vines, and the unique characteristics of the wine they produce. We strive to make the vineyards better through research and a consuming passion for producing the best wine. Contact us for more information at 916-744-1094.

Clarksburg's limited summer fog influence gives it the benefit of a few more hours of sunlight at the same month high temperature. This enables Clarksburg to grow a more diverse portfolio of premium wine grapes, all achieved with less risk and higher probability for consistent quality.

Average Annual Growing Degree Days

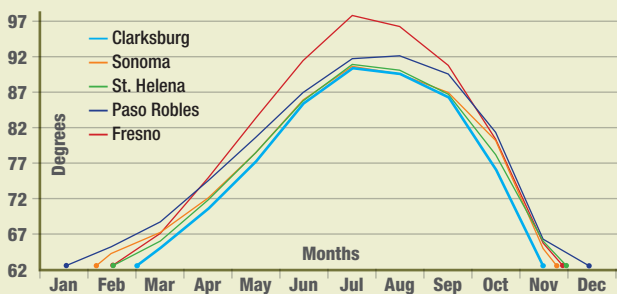
*Data sourced from Western Regional Climate Center at 50°F base



Clarksburg's premium wine grape microclimate compares with the best regions in California. St. Helena, Sonoma and Paso Robles to name a few.
Clarksburg = World-Class Winegrowing

Monthly Maximum Temp Climate Summaries

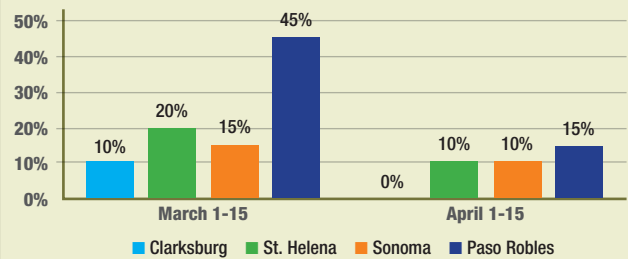
*Data sourced from Western Regional Climate Center on 29 year average



Clarksburg's has significant less probability for spring frost, allowing Clarksburg to achieve more consistent productivity, quality and evenly ripened premium wine grapes year after year!

Spring Freeze Probabilities at 28.5°F

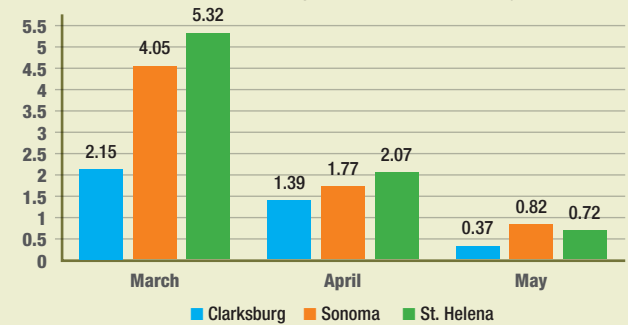
*Data sourced from Western Regional Climate Center on 30+ year data



Clarksburg has less spring rainfall, depleting ground water faster, stressing the vines sooner creating a more flavorful wine grape berry and wine year after year!

Spring Monthly Average Rainfall

*Data sourced from Western Regional Climate Center 30+ year data



Less rainfall during critical wine grape growing stages to ensure the highest most consistent quality wine grapes available in California.

Fall Monthly Average Rainfall

*Data sourced from Western Regional Climate Center 30+ year data

